

Construire des maisons en papier

dossier préparé par
Michel BONNETIER

des édifices cultuels

troisième partie :

**compléments architecturaux divers
pour les églises du culte catholique :**

- porches
- chœur
- arcs boutant
- contreforts
- bas côtés
- église en plusieurs parties
- cloîtres
- clochers, clochetons
- campaniles

(La première partie a paru dans la livraison CPE n°321 en janvier 2001
où l'on trouvera également une présentation d'ensemble de ce dossier.
La deuxième partie a paru dans la livraison CPE n° 322-323.)

Mise en oeuvre

1.

Les développements présentés dans ce dossier sont prévus pour être photocopiés sur du papier format A4.

Certes on peut utiliser le papier habituel des photocopieurs (80 g/m²) mais on obtient un meilleur travail et un meilleur résultat avec un papier plus lourd par exemple un papier de 160 g/m².

De tels papiers sont disponibles dans le commerce (même dans les grandes surfaces) (souvent par paquet de 100 feuilles) à des prix raisonnables et leur passage dans le photocopieur ne crée aucune difficulté surtout si on prend soin de les passer manuellement.

2.

Le découpage doit se faire avec le maximum de précision.

3.

Les lignes de pliage sont faciles à repérer : leur tracé est discontinu. Avant de plier, il faut «marquer» le pli, tous les plis d'un même développement. Pour cela on travaille avec une règle plate et une pointe (une pointe de compas, ou le dos de la pointe d'un petit couteau d'office, ou la pointe d'un plioir, ou ...)

Les plis ainsi marqués permettent une précision maximale.

4.

Pour le collage, il convient d'utiliser une colle «gel» qui ne coule pas, d'en déposer suffisamment, mais surtout pas en excès, et de bien la répartir.

Maintenir l'assemblage le temps que la colle «prenne» (c'est assez rapide par exemple avec une colle telle «Uhu gel extra»).

Pour une maquette donnée, commencer par les assemblages les plus délicats et terminer autant que possible par la base.

5.

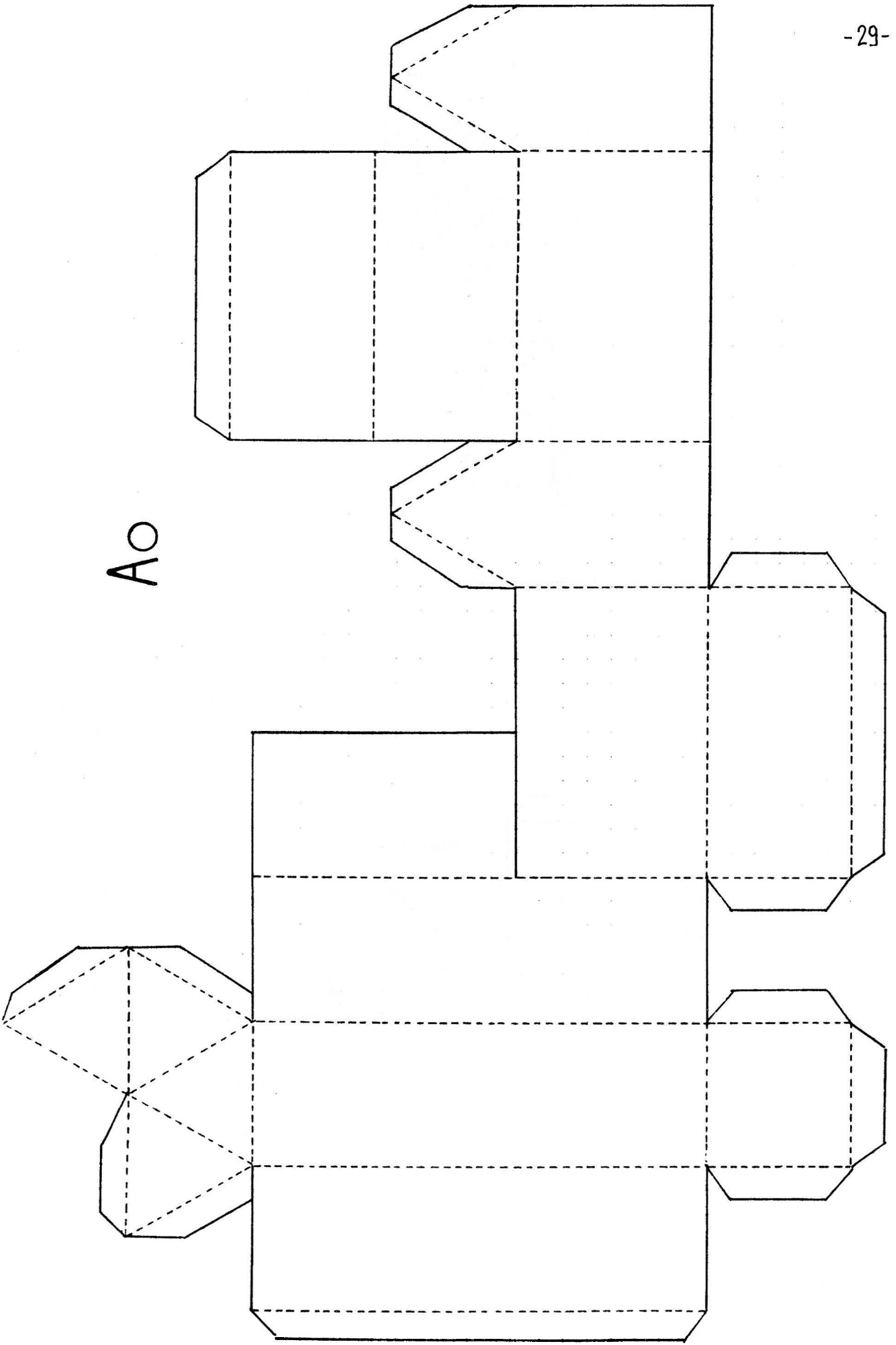
Le développement collé et bien sec, la mise en couleur de la maquette est encore possible aux feutres.

(Pour un coloriage aux crayons de couleurs il vaut mieux travailler sur le développement à plat.)

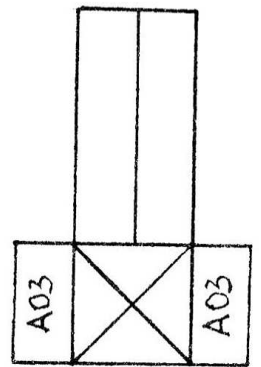
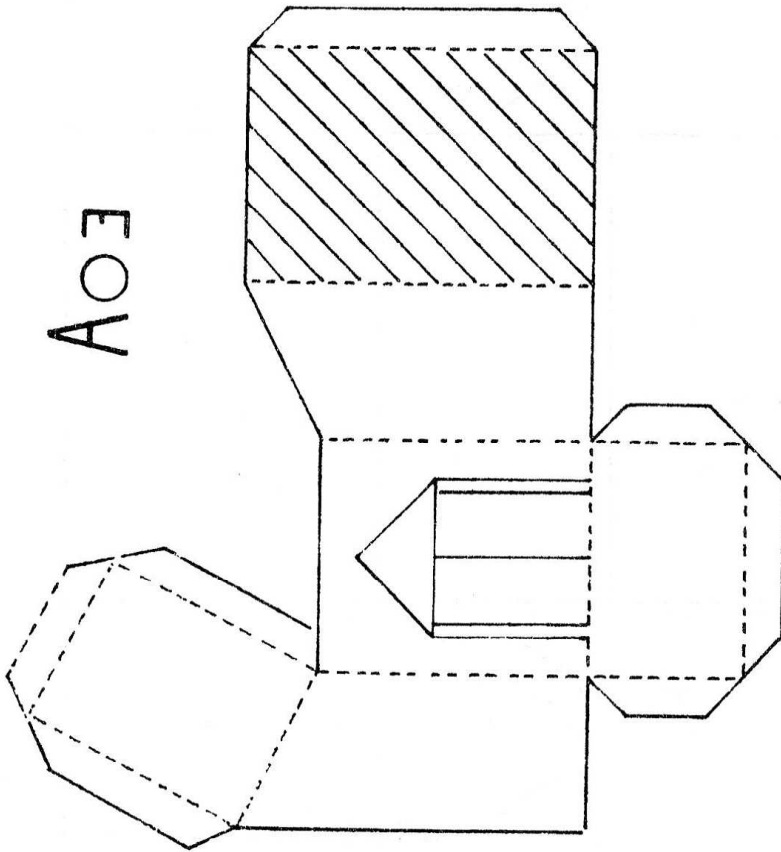
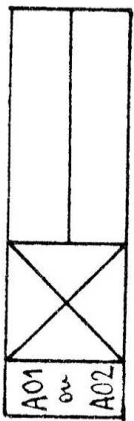
6.

Les maisons et les édifices ainsi fabriqués peuvent être regroupés pour former des quartiers, des villages petits ou grands ...

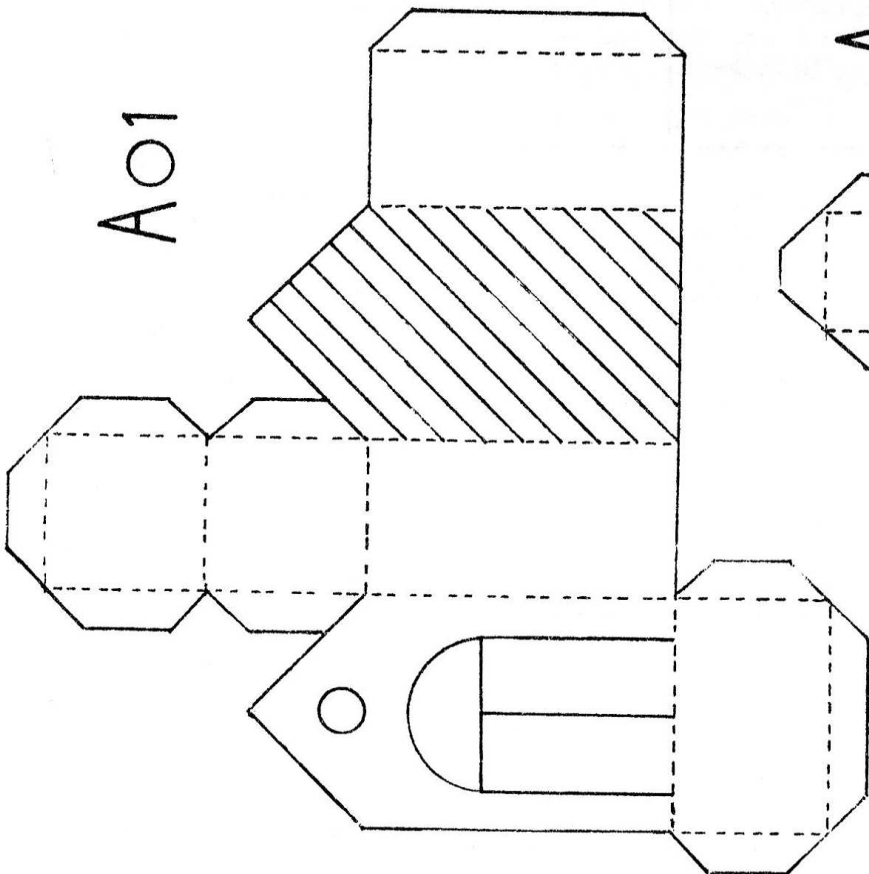
Ao



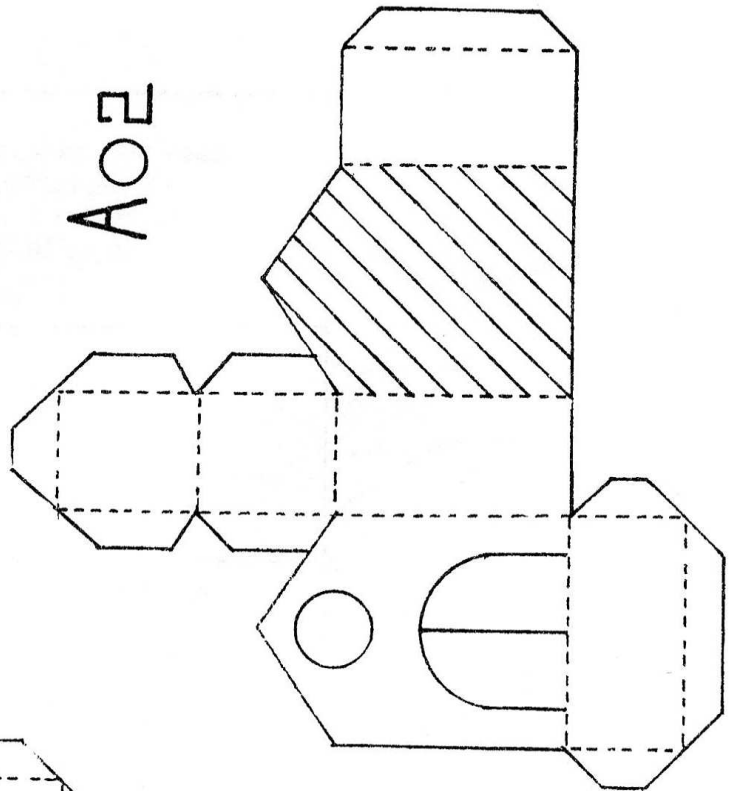
A03



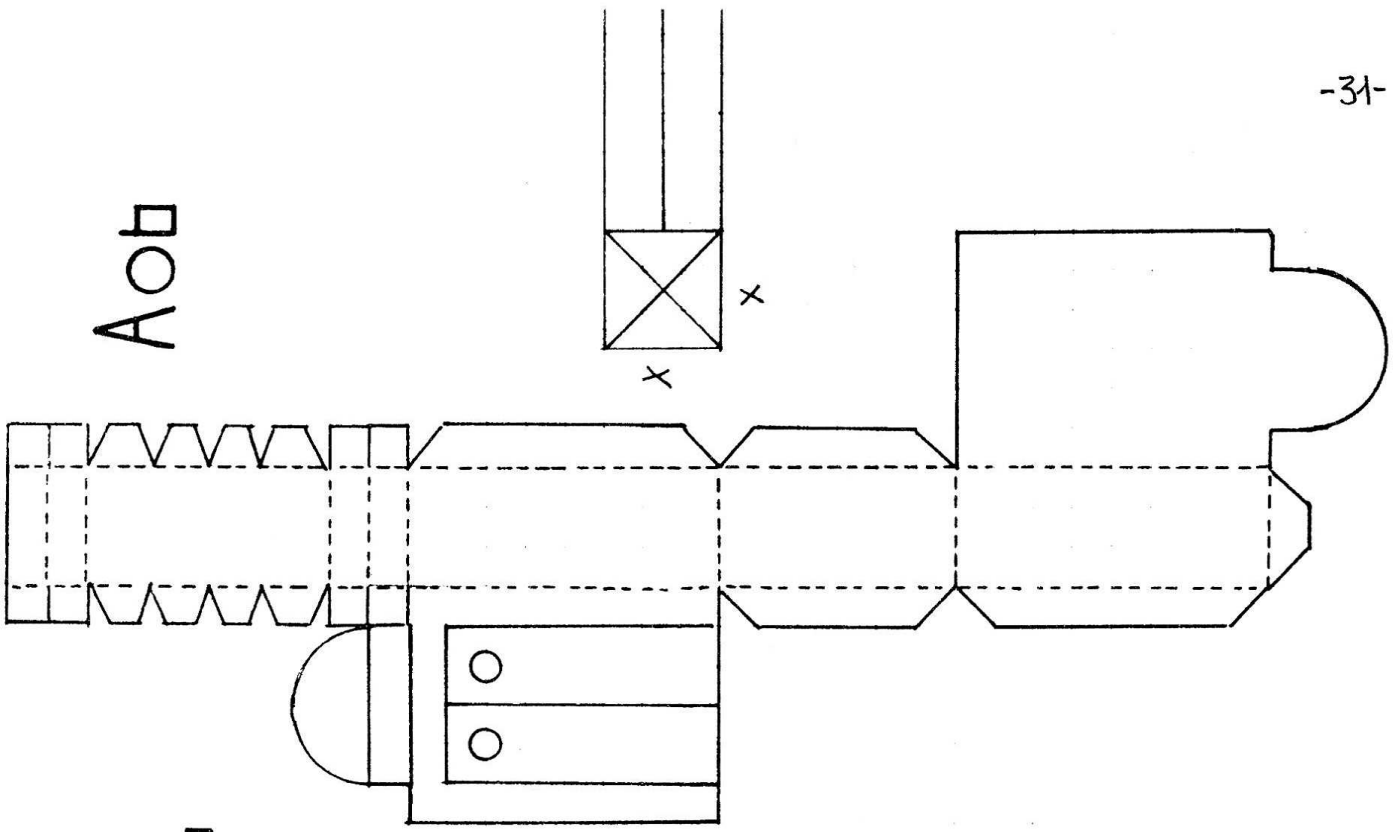
A01



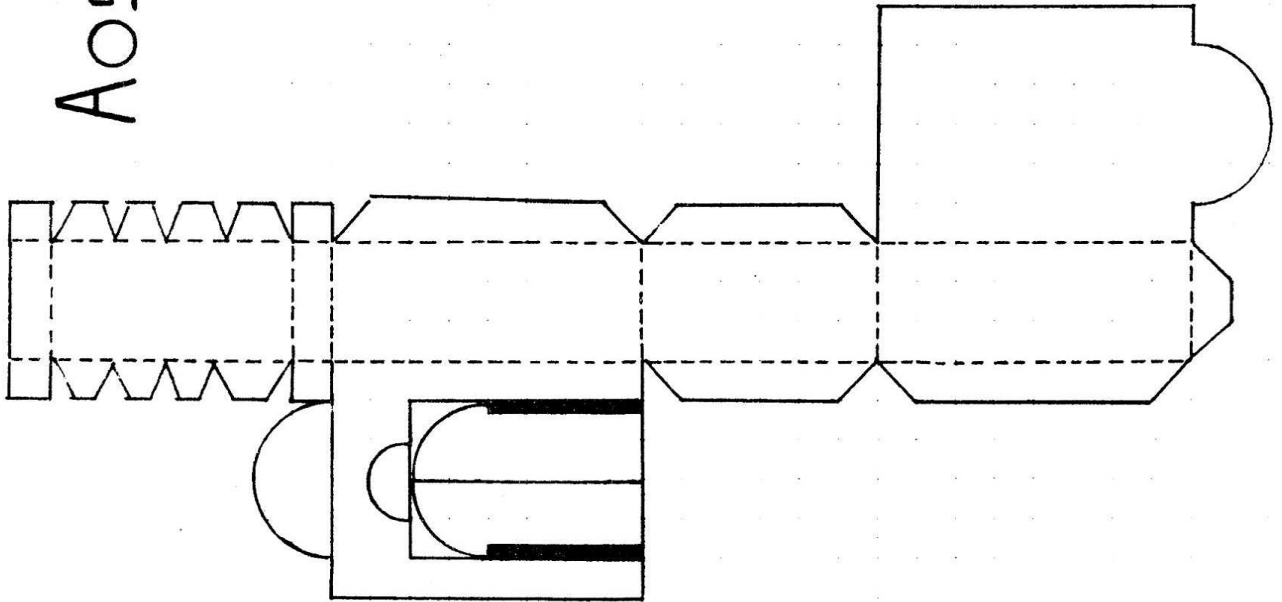
A02



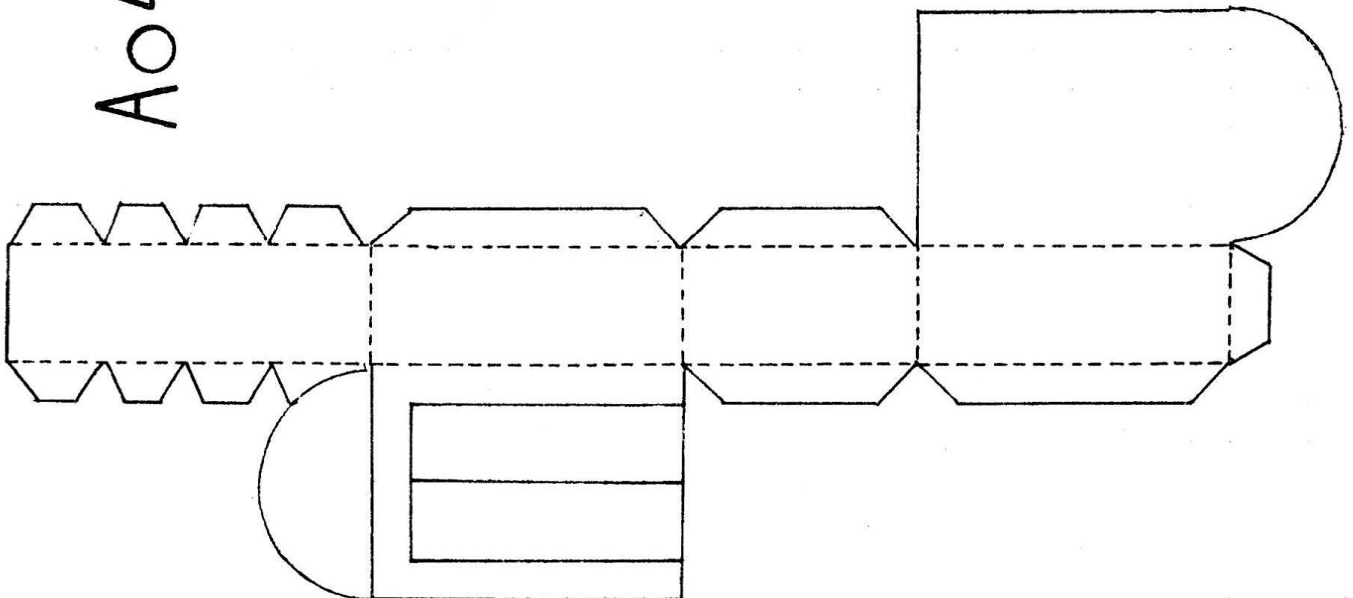
A0b



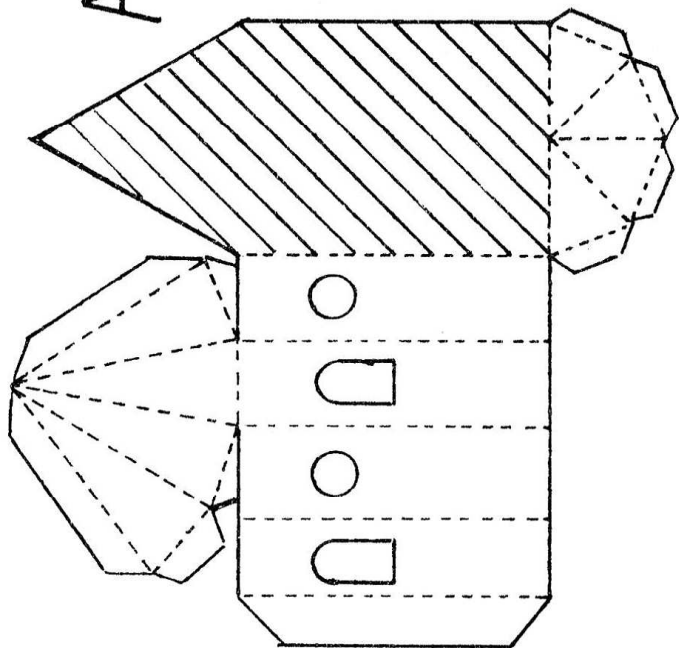
A05



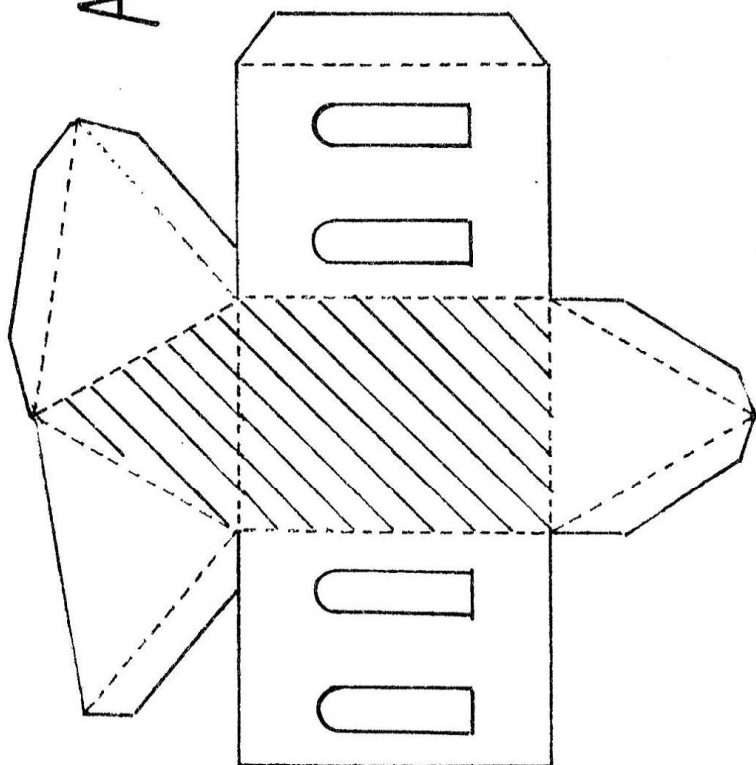
A04



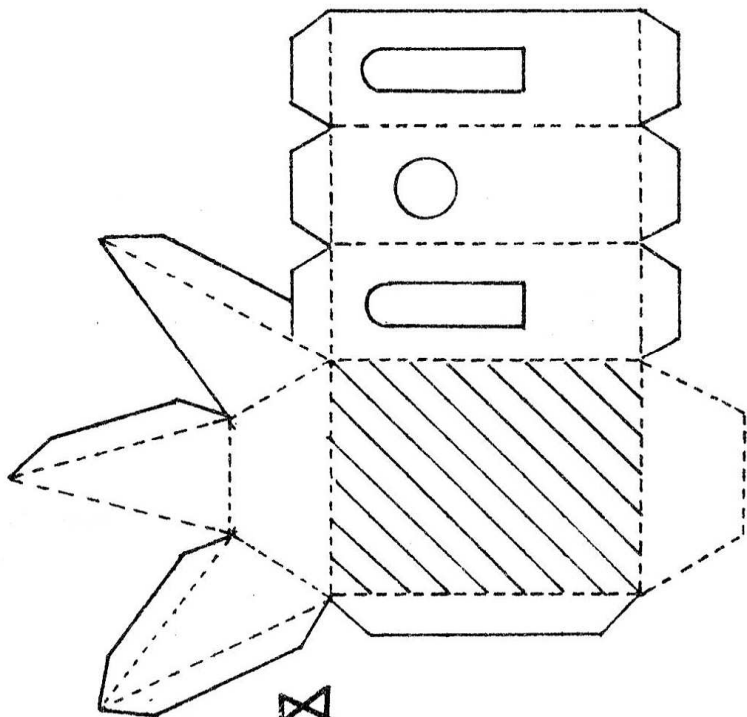
A09



A07

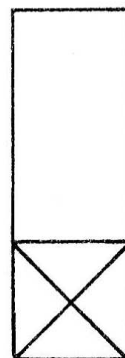


A08

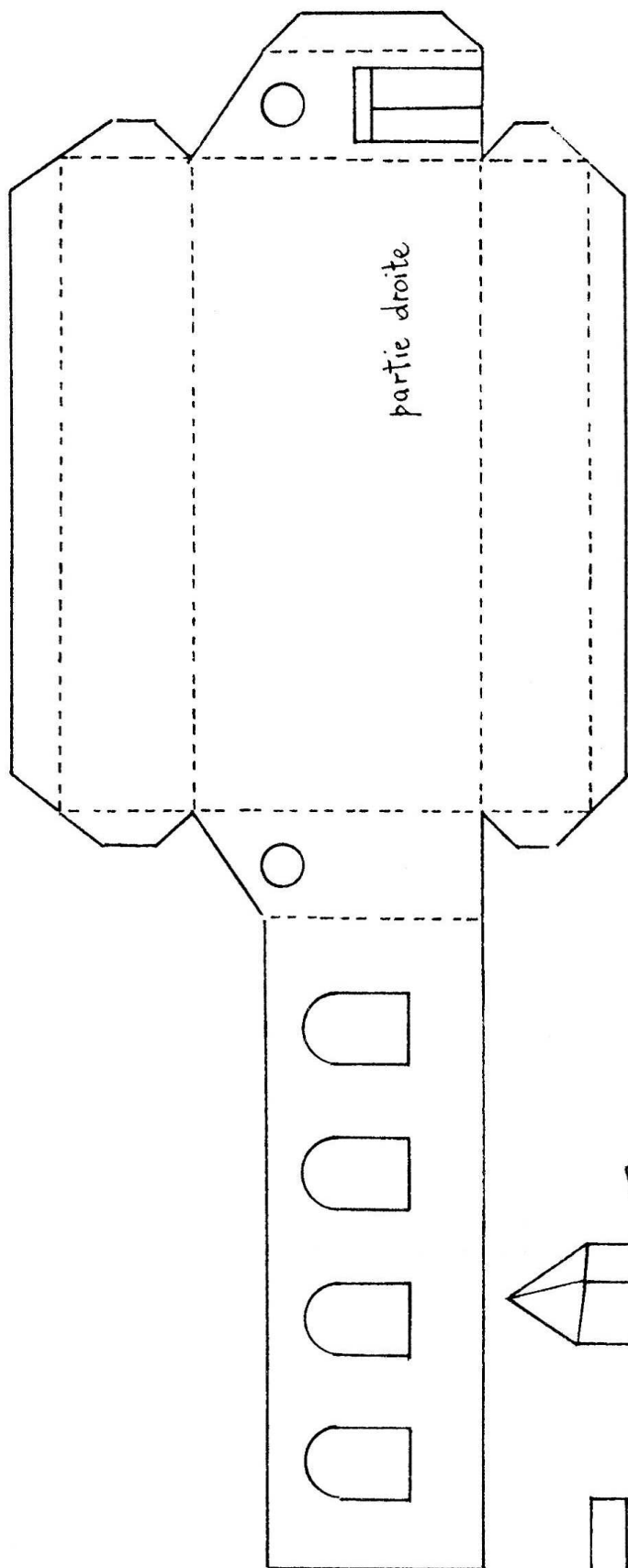


A07
A08
A09

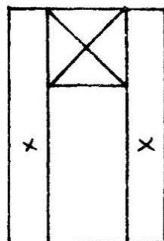
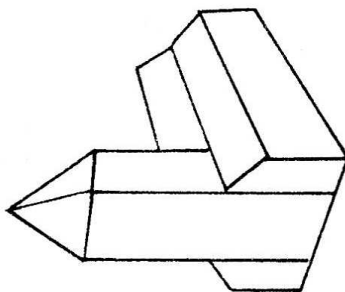
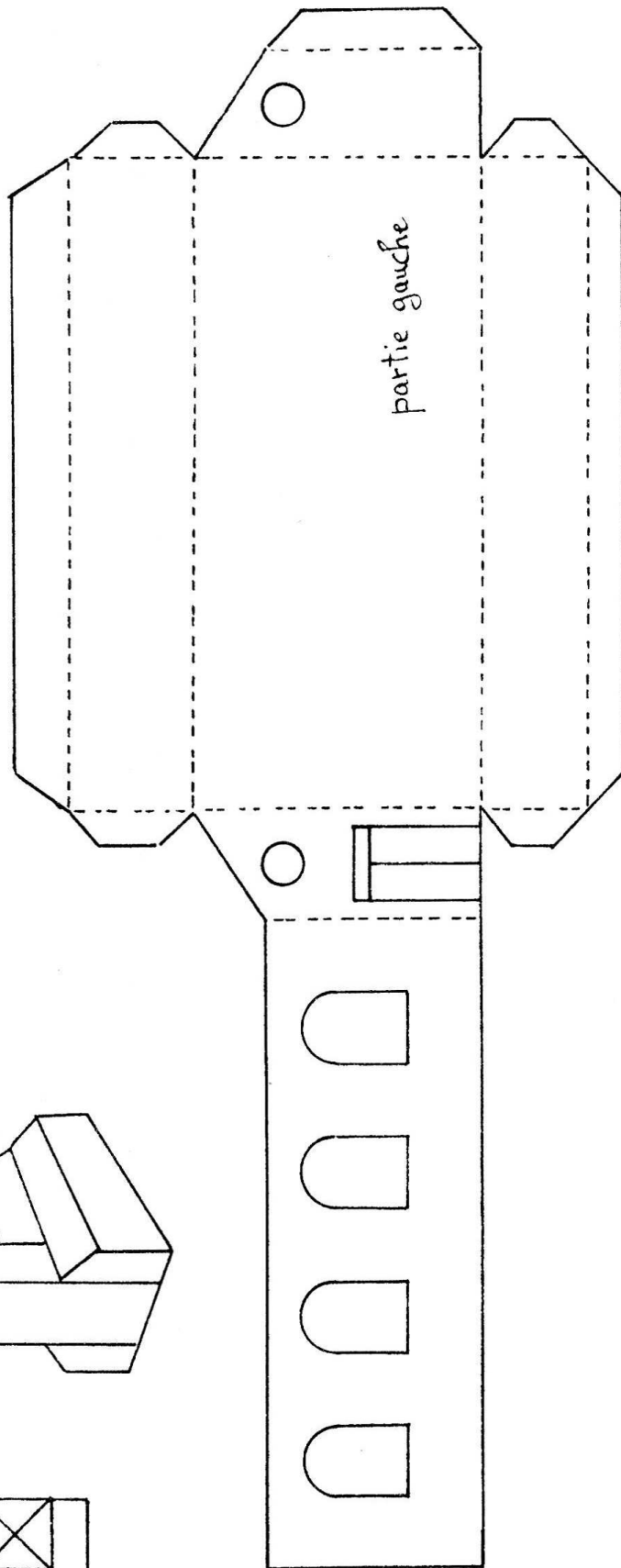
x



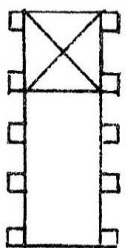
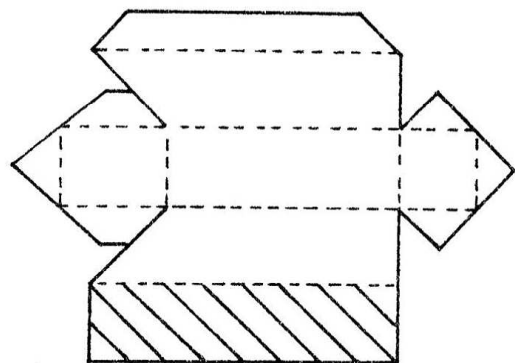
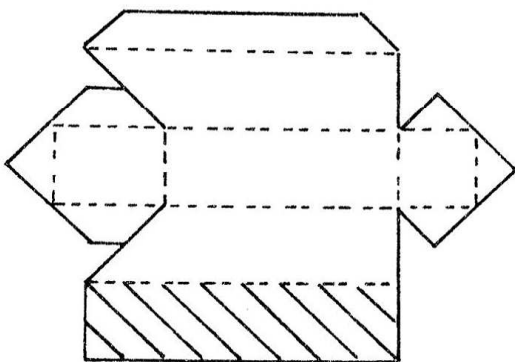
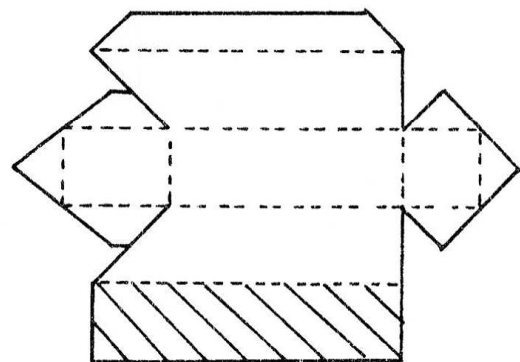
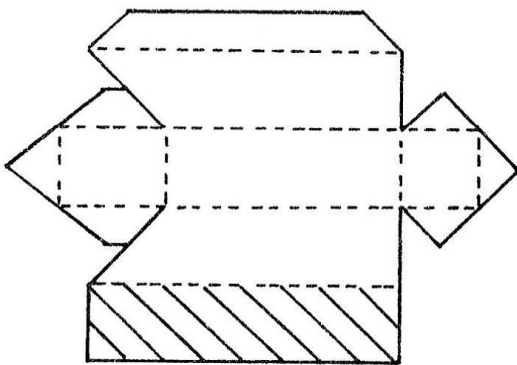
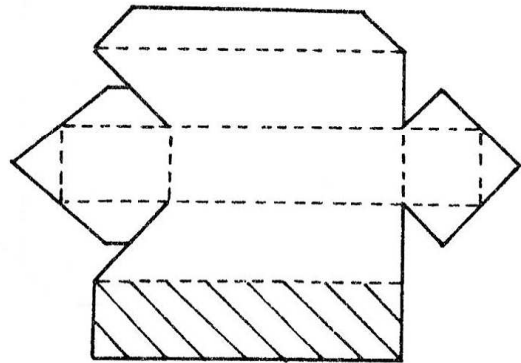
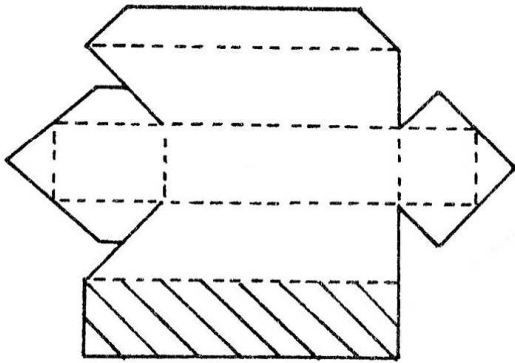
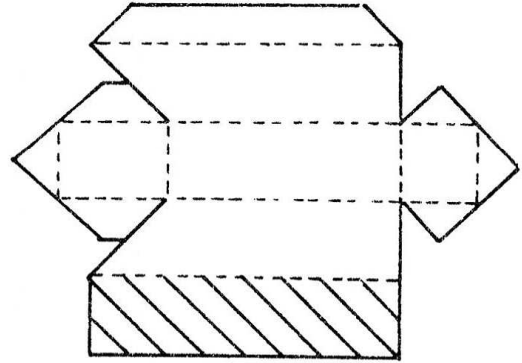
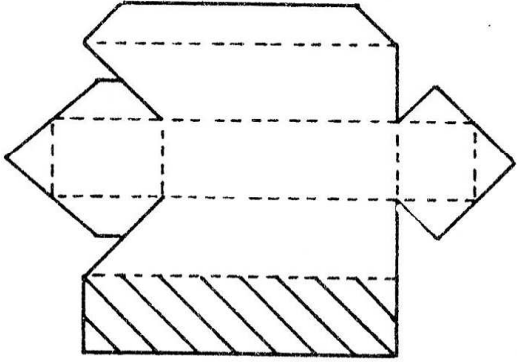
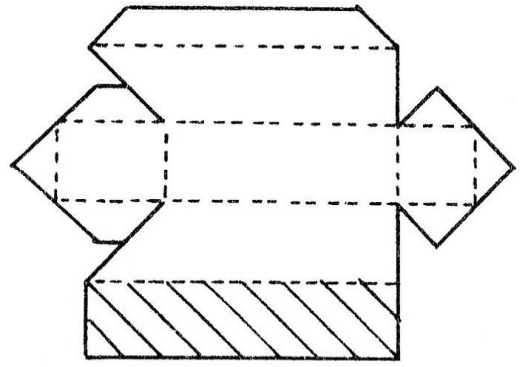
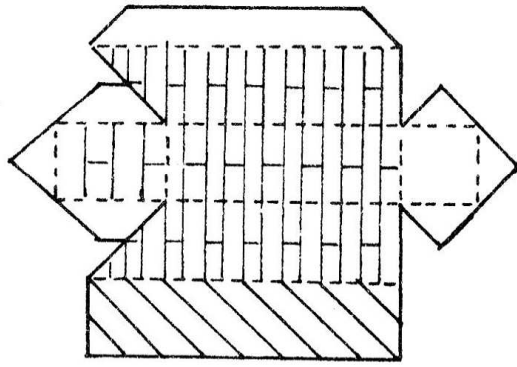
A 10



A 11

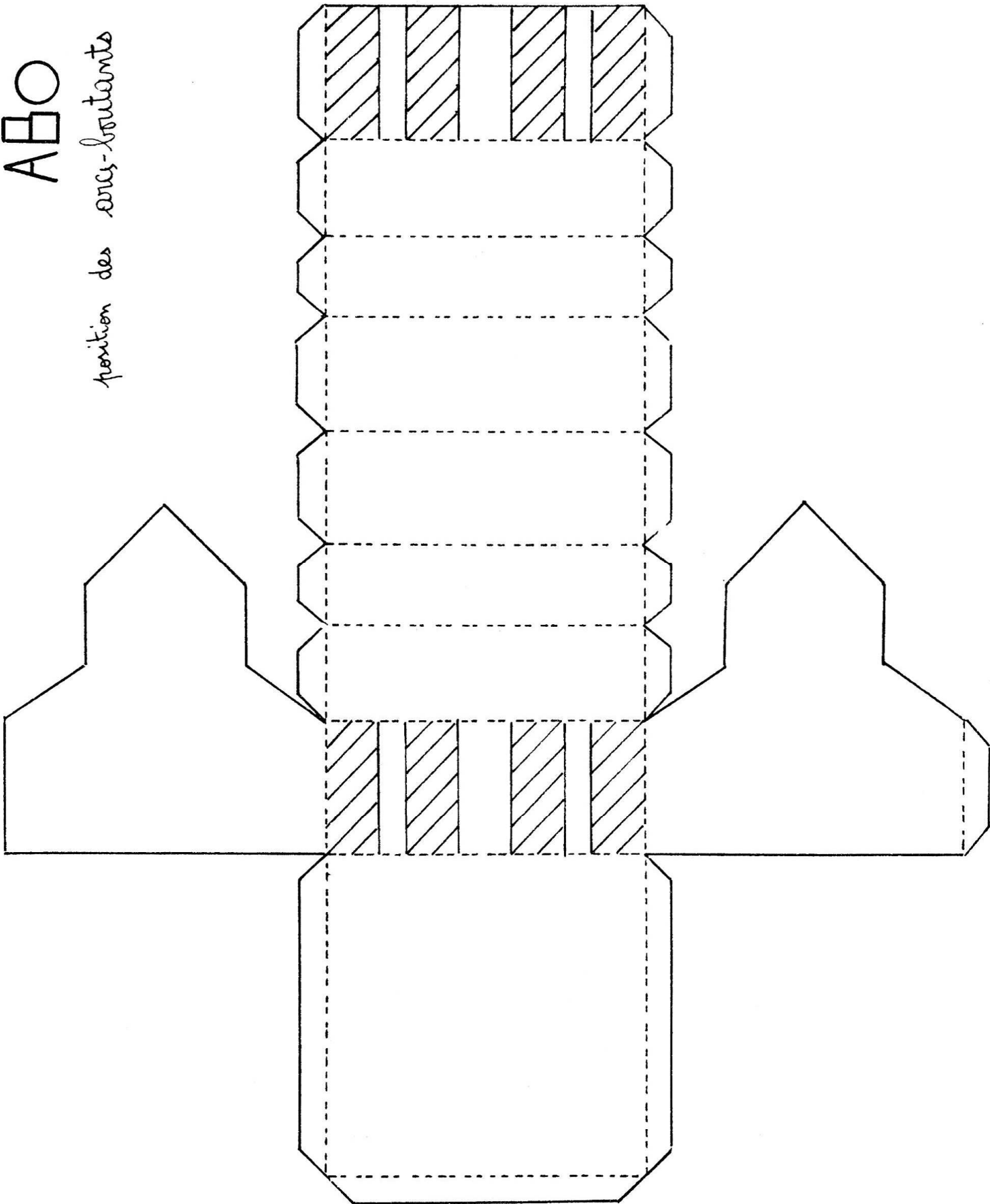


A12
-contreforts



ABO

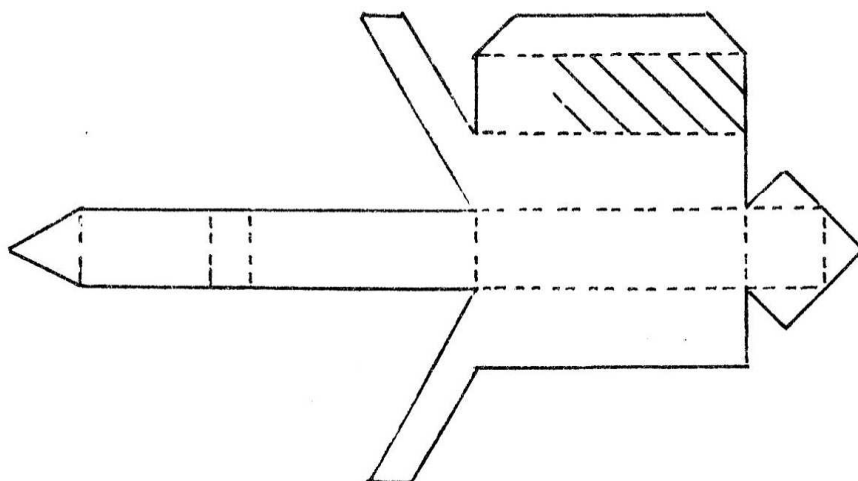
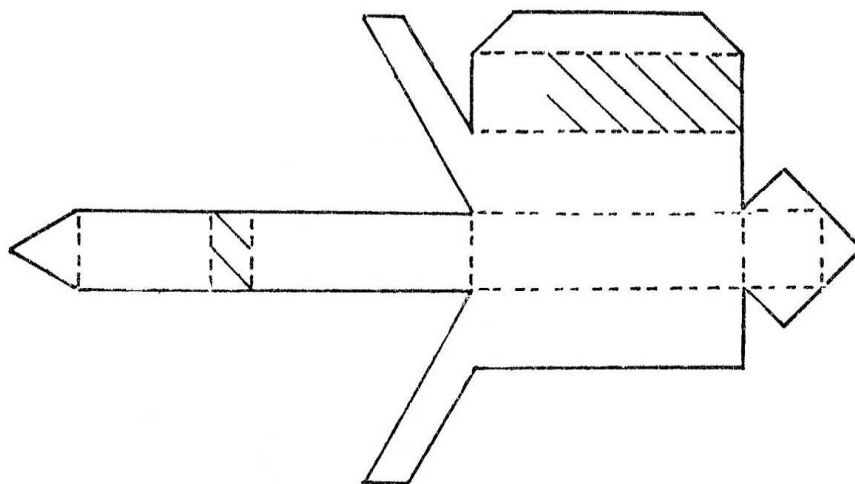
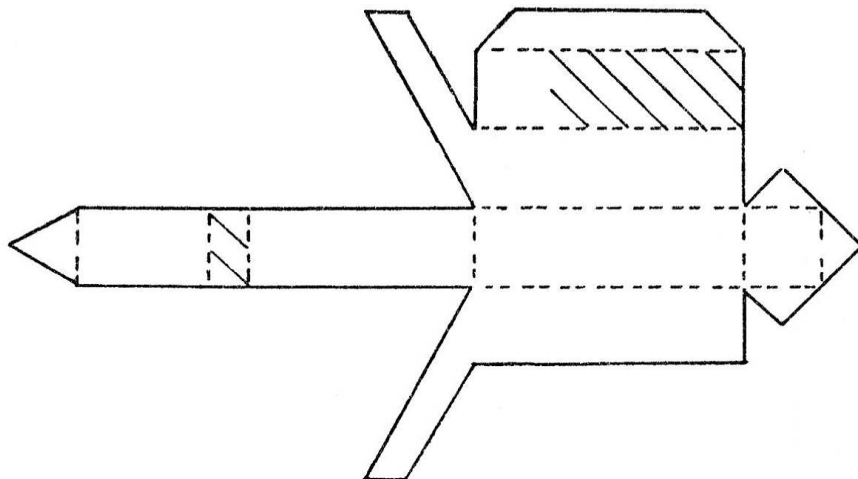
position des arcs-boutants

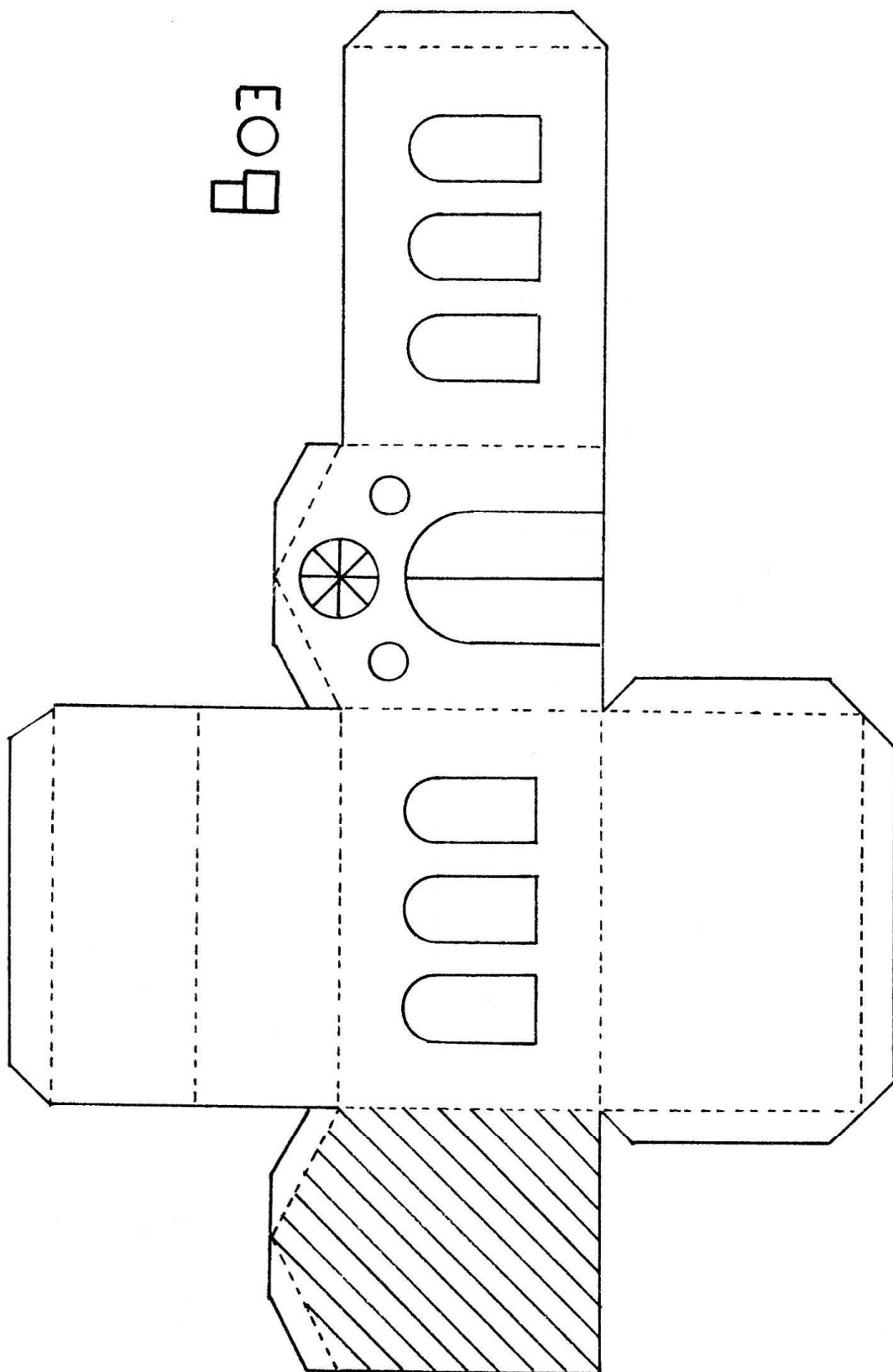


AB1

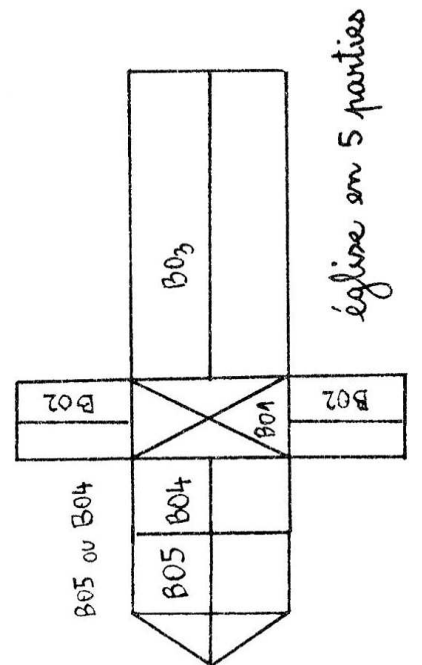
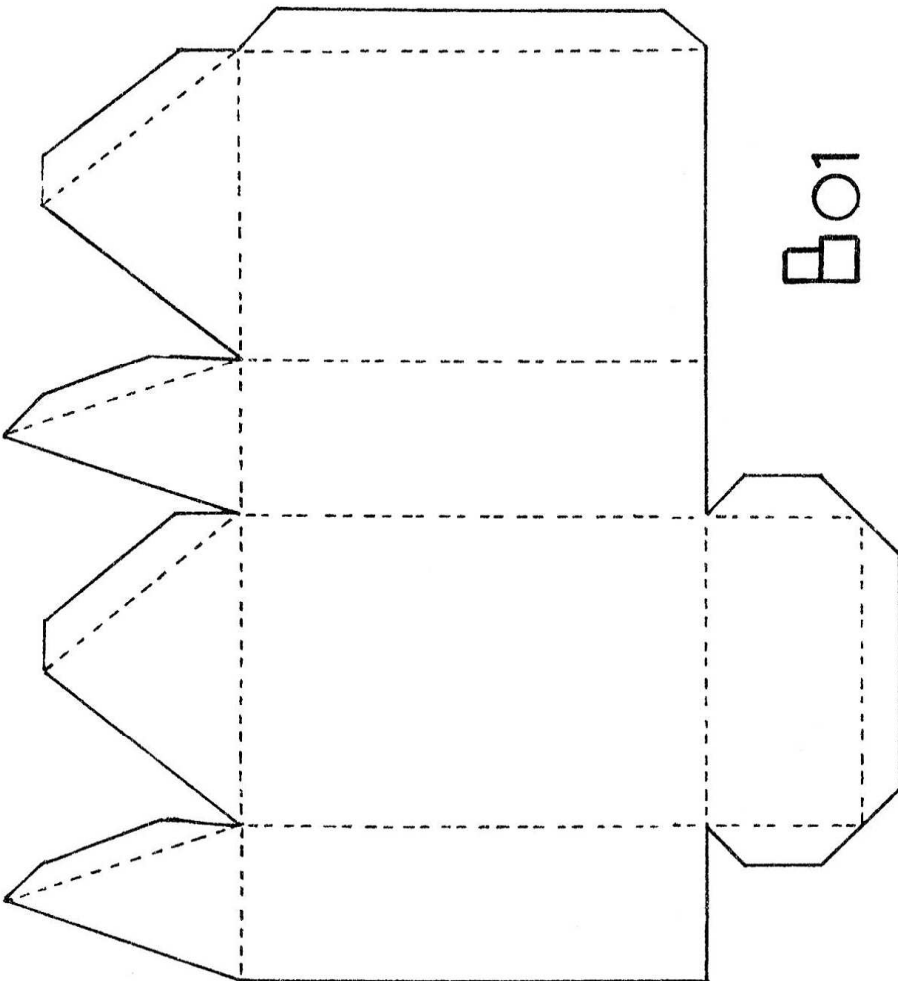
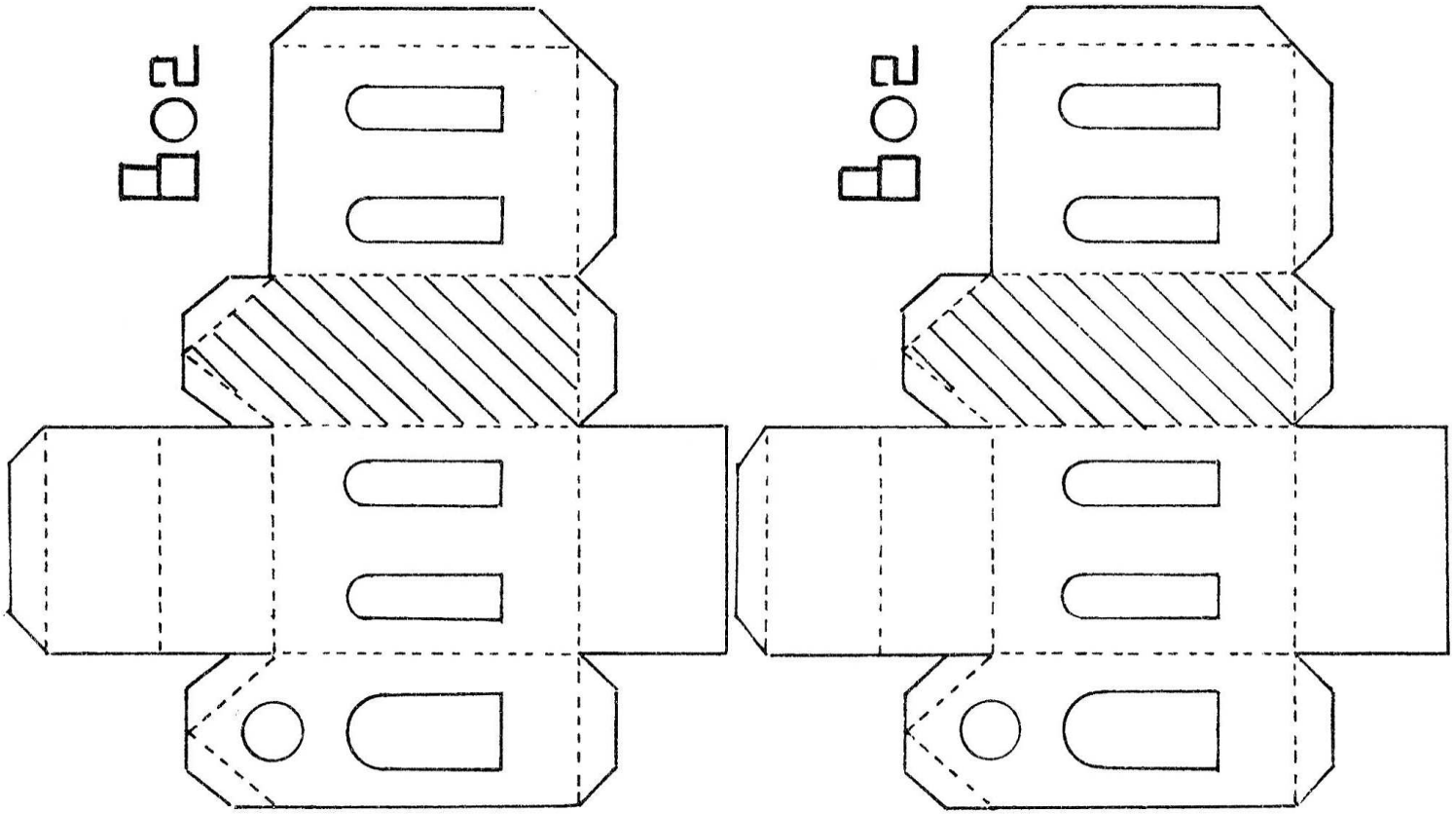
avec - bristants

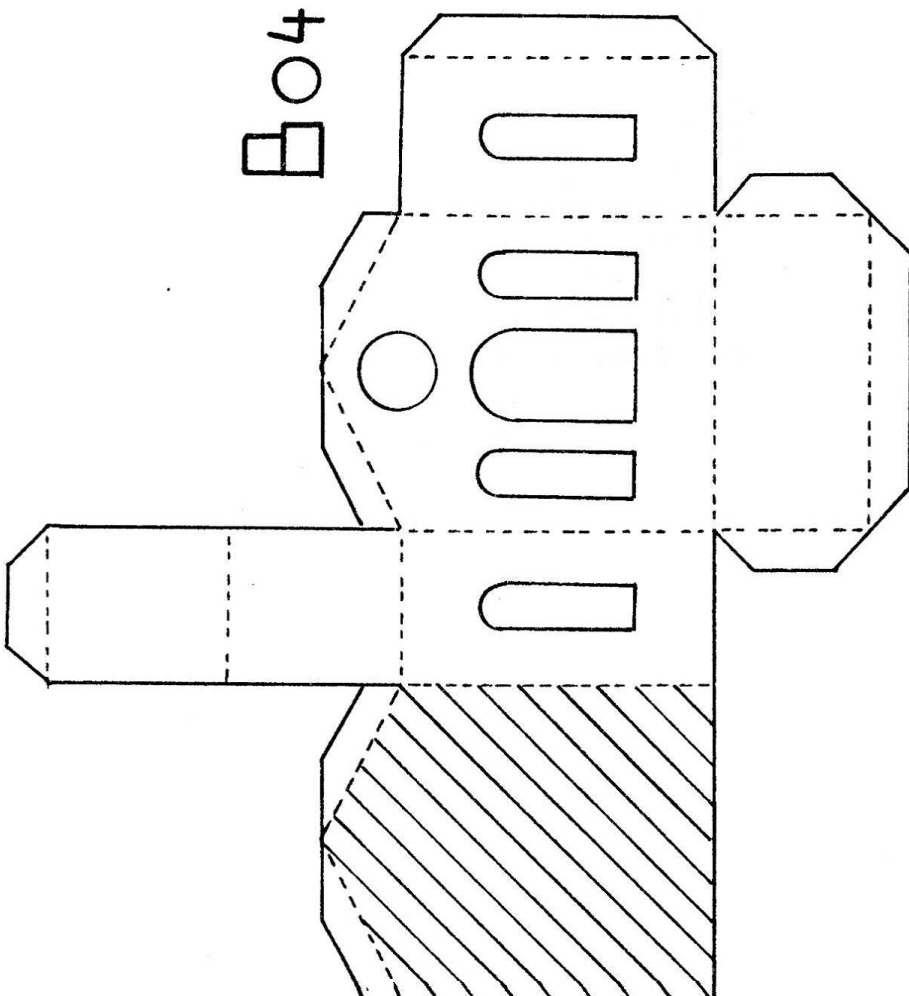
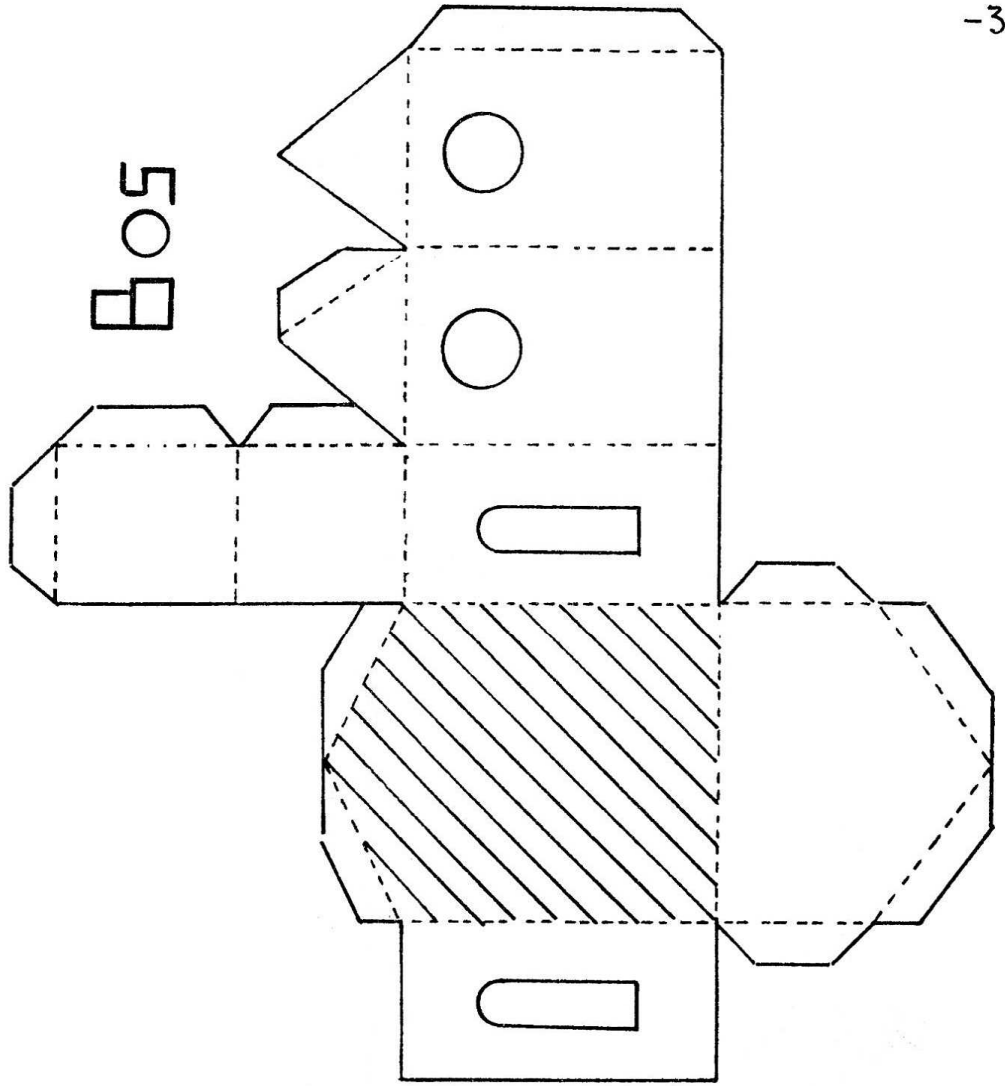
à reproduire





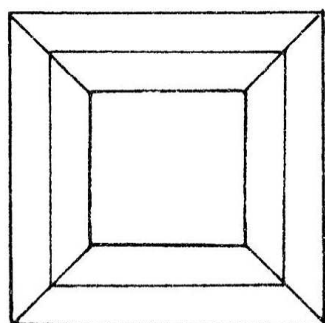
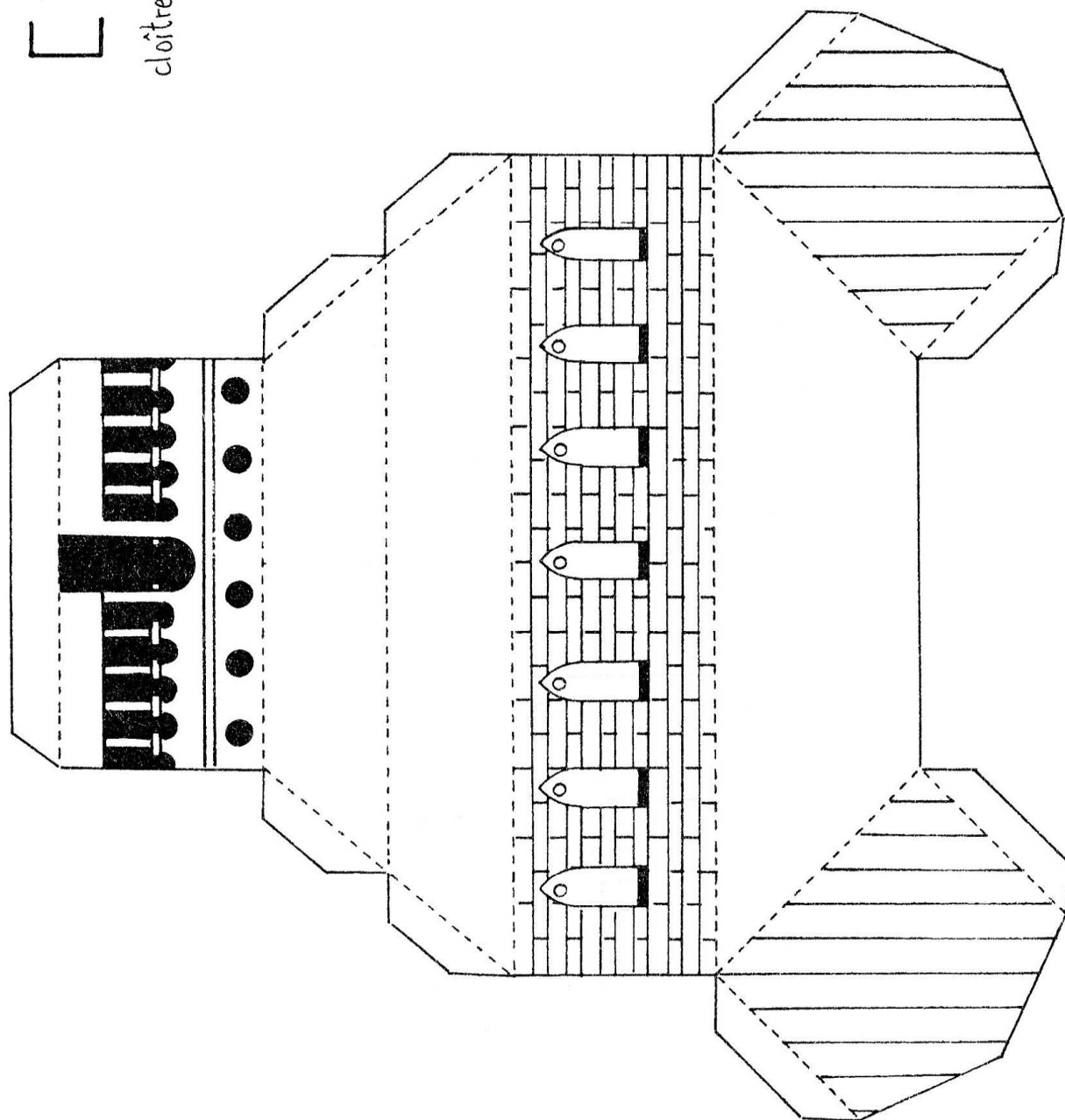
FOR





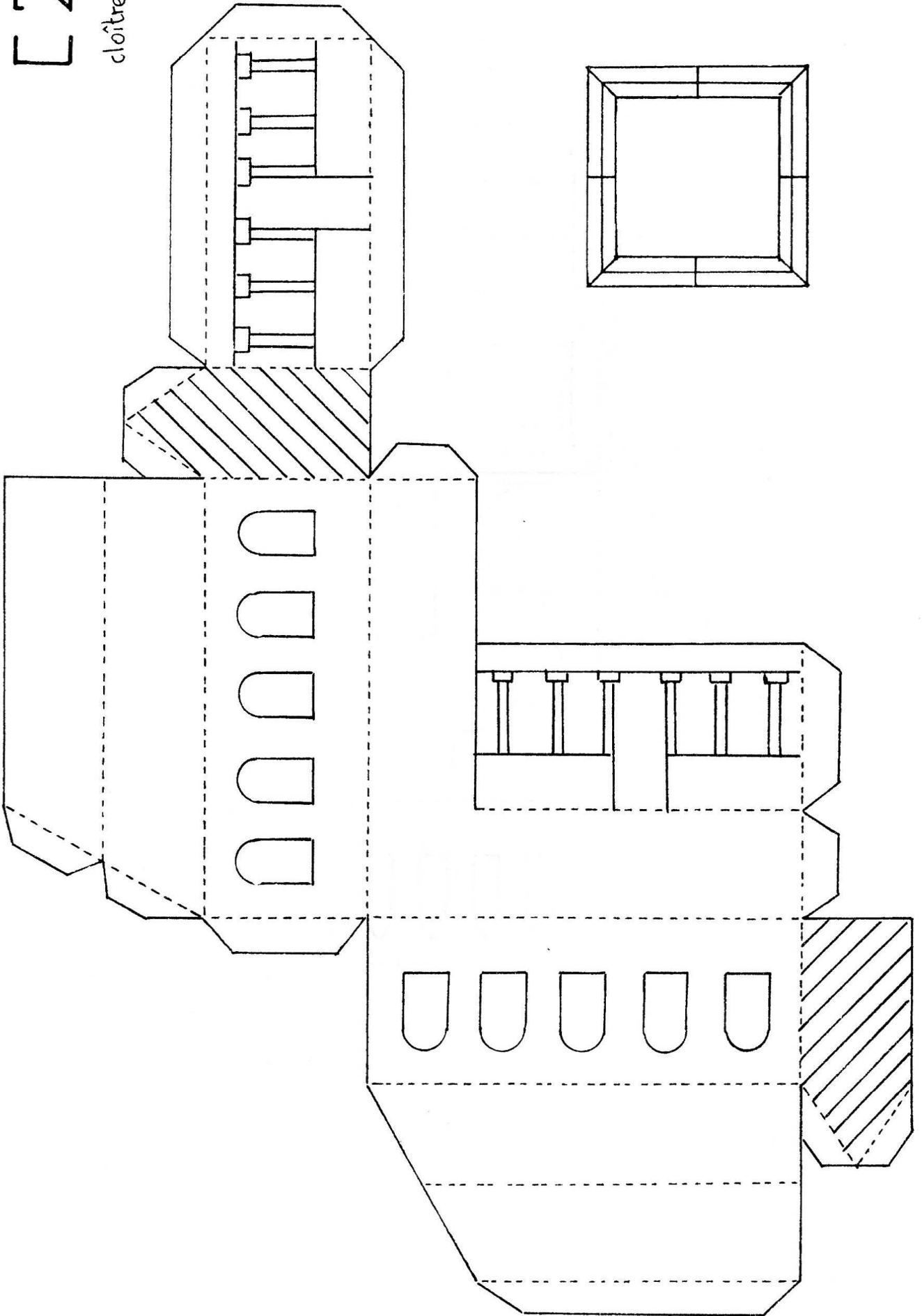


cloître



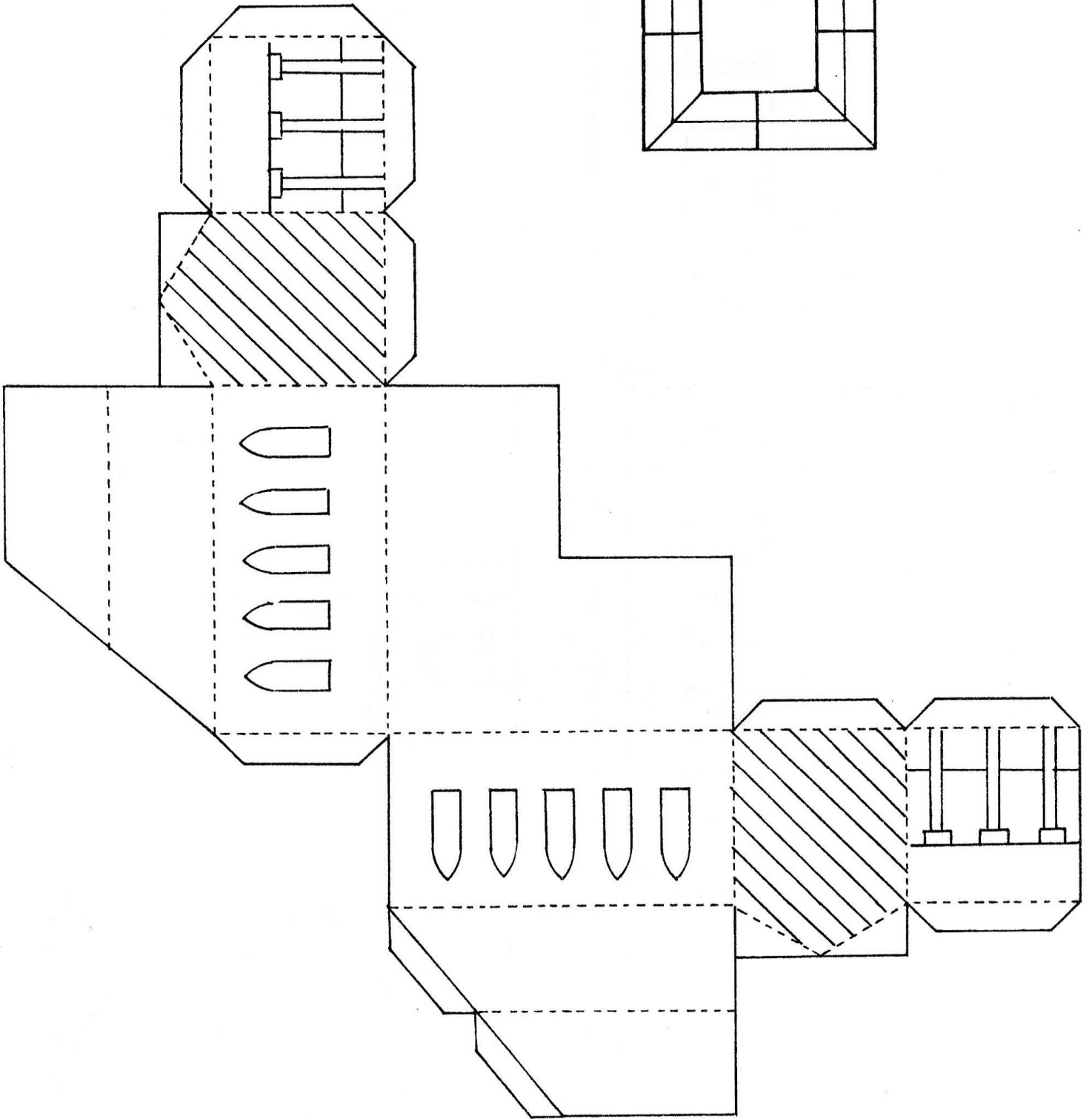
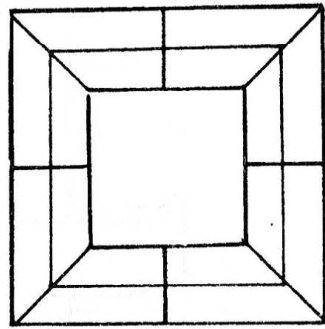
[2

cloître

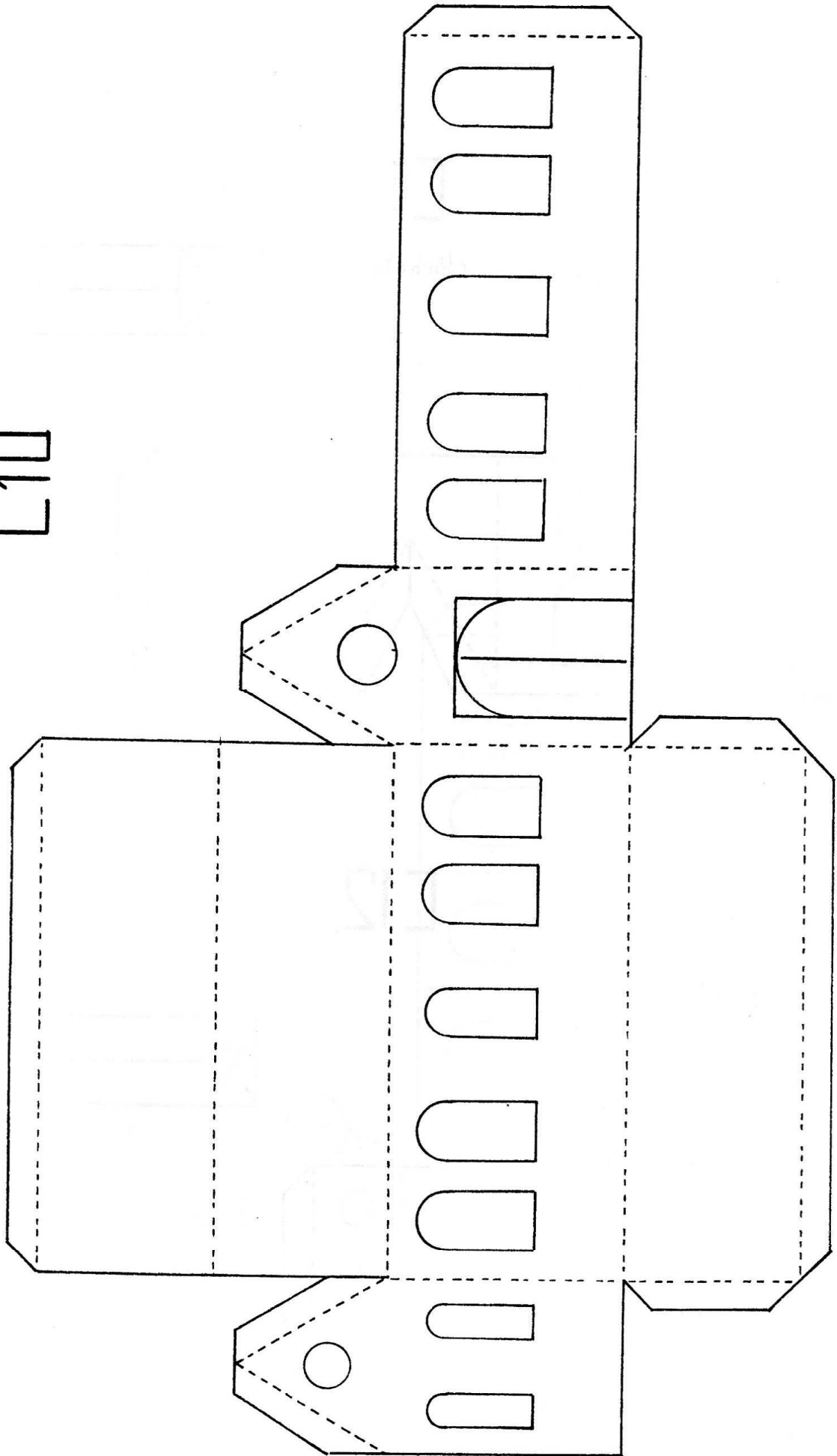


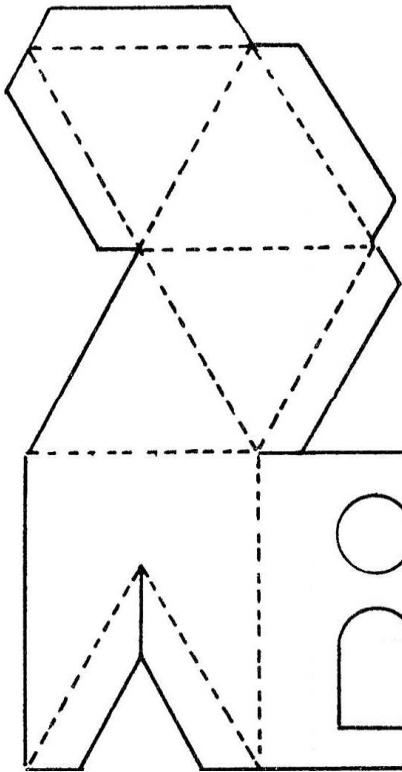


cloître

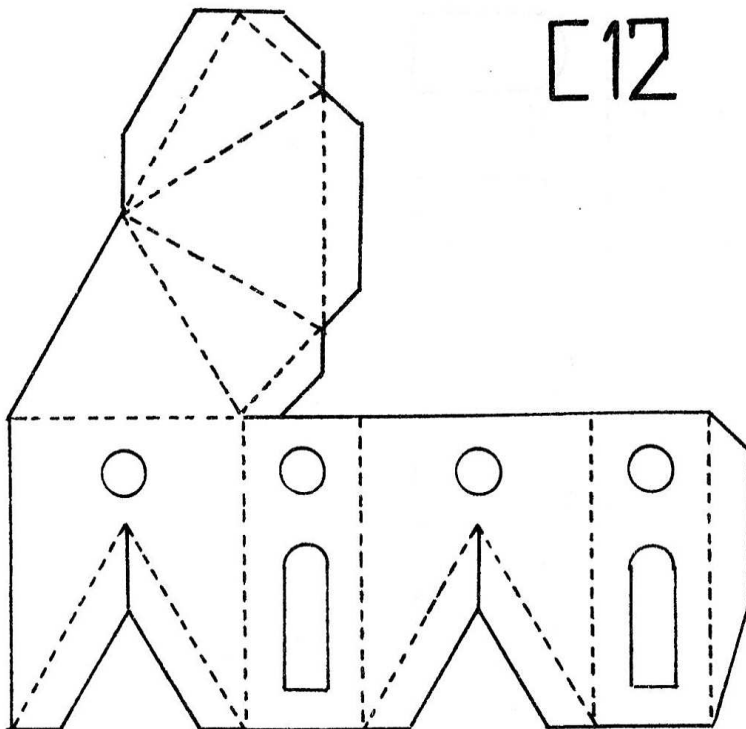
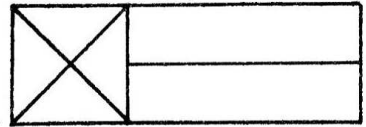


[10]

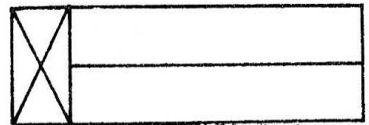


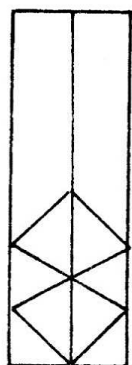


[11]
clocheton

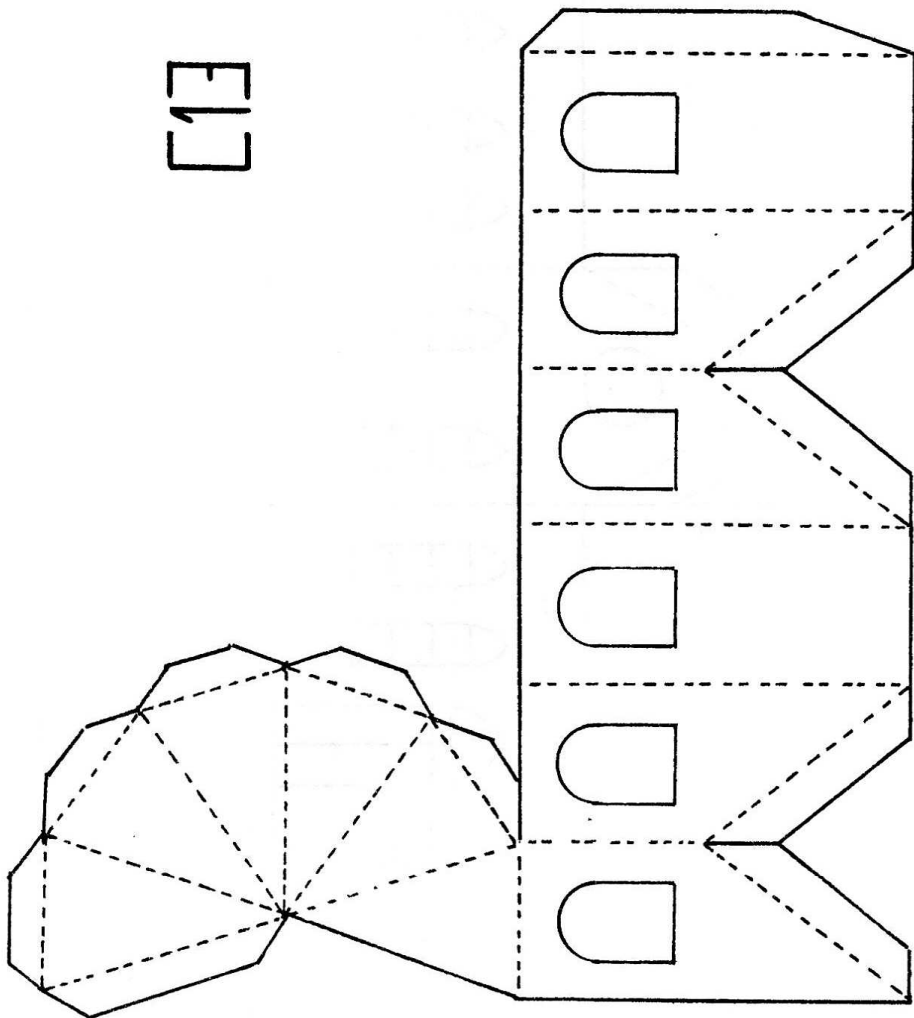


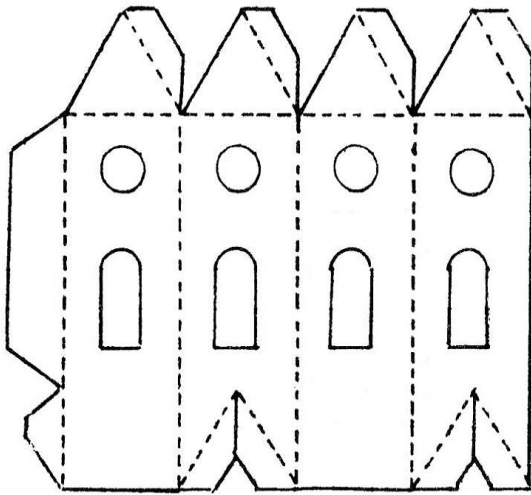
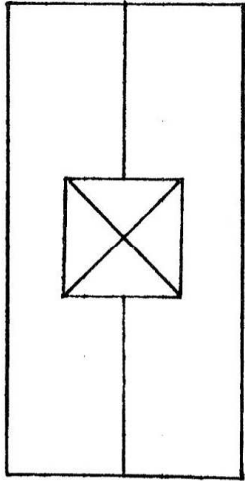
[12]





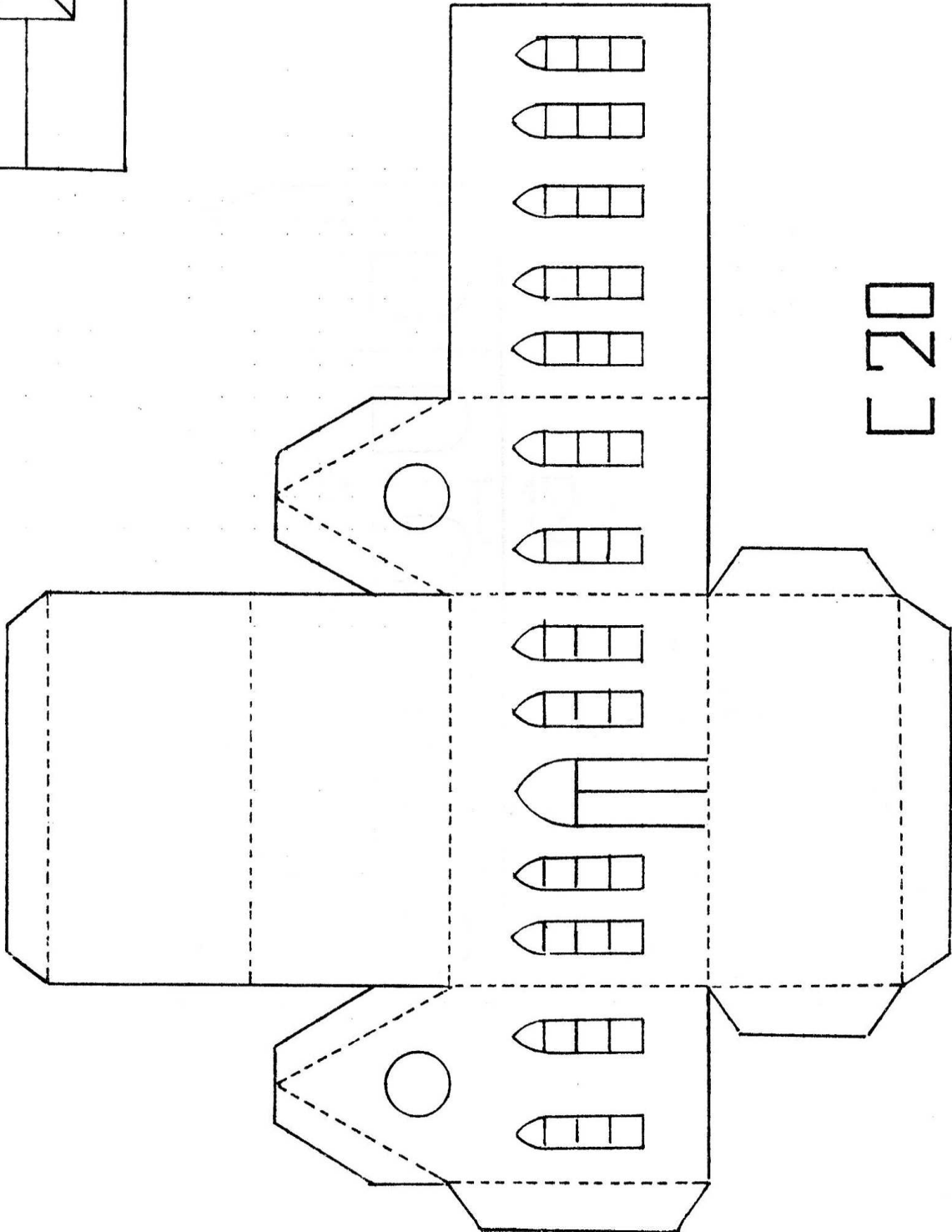
FIG



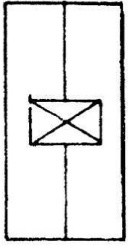


[21]

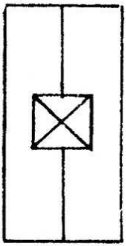
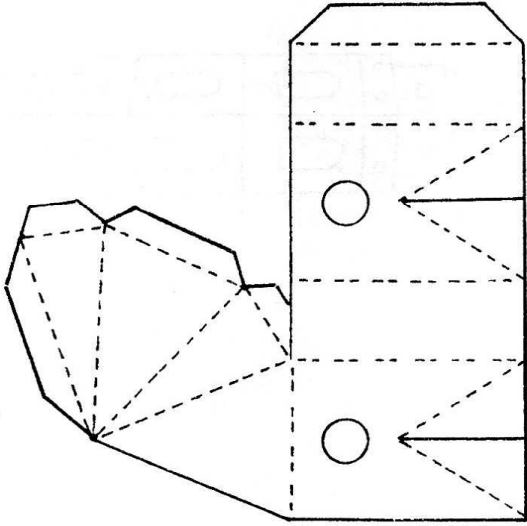
clochette



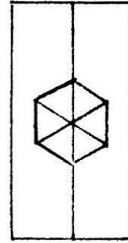
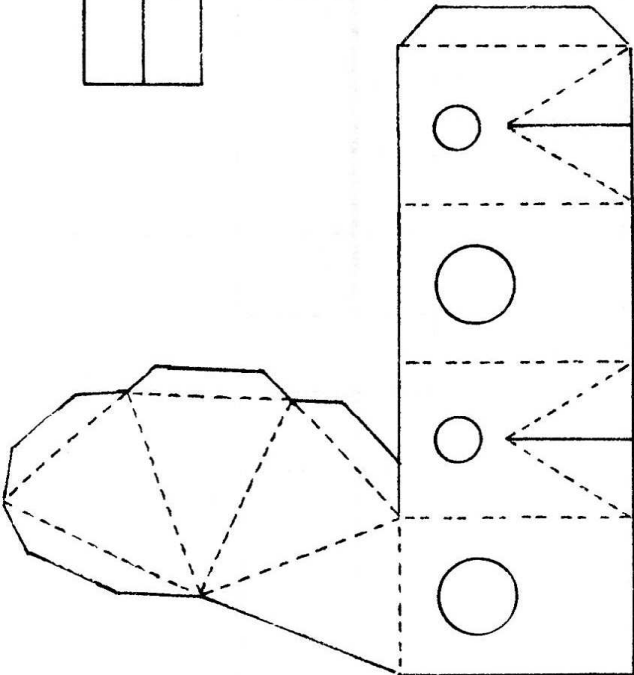
[20]



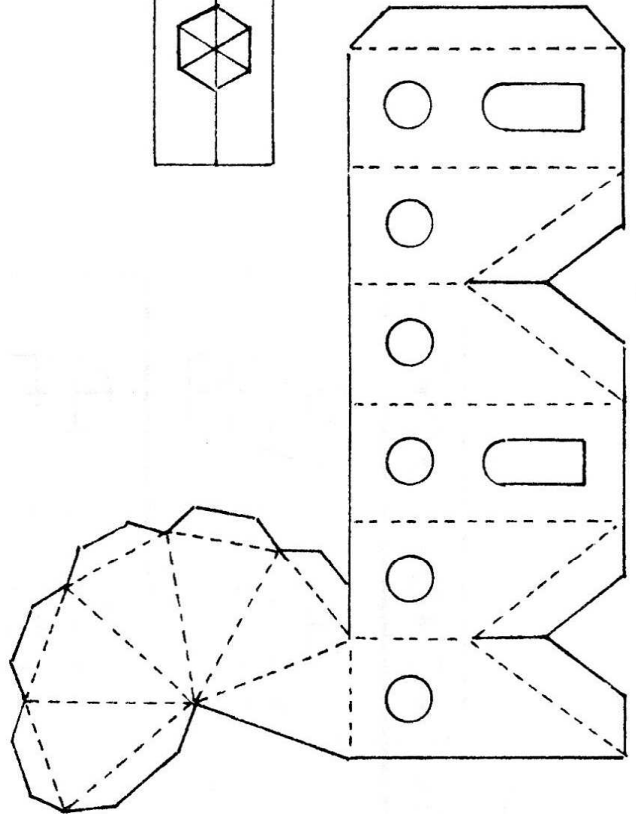
[23]

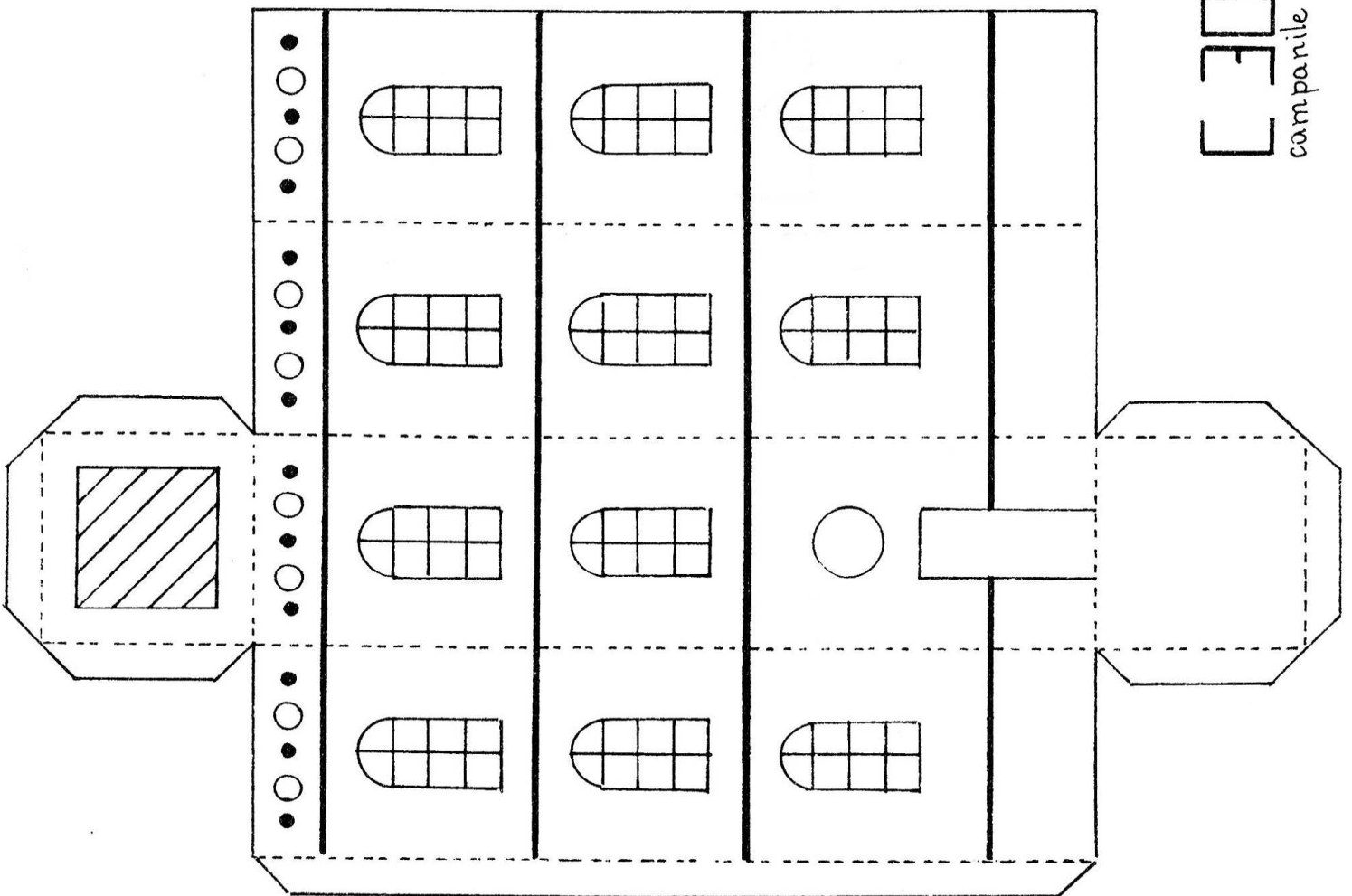
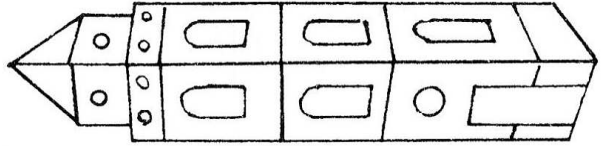
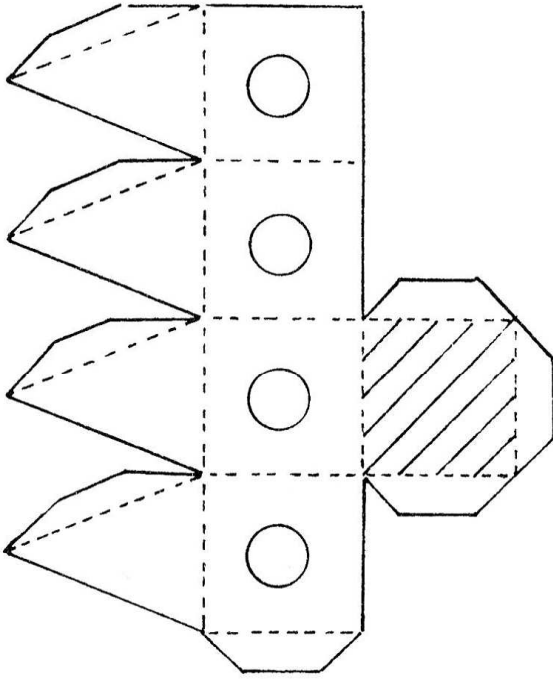


[22]

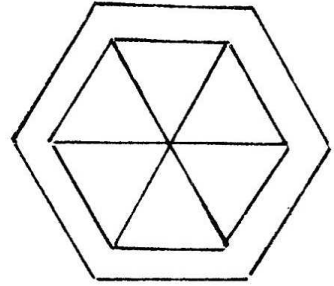
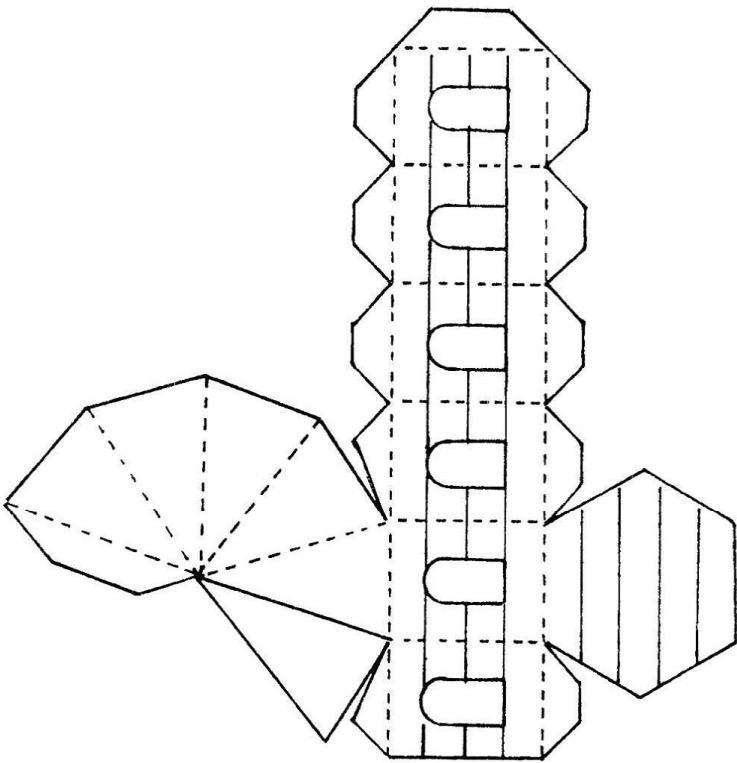


[24]





[30] *compartile*



C31
campanile

